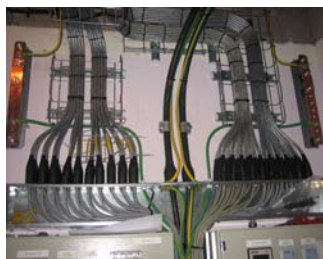


Stage 1 of Server Room Enhancement nearing completion

Over the past few weeks Sturrock Power (our main contractor) have been bearing away with the construction of the new Server Room. They have now in-



Cable Connections



Central Distribution Fuse Panel

central distribution fuse panel linked to our new UPS System.

The main Power cables were successfully connected into the new UPS room on Sunday, 22nd February. This was a critical part of

the project and the successful completion of this stage means that the project deadline for Stage 1 stays on target.



New suspended floor

The new suspended floor is well under way, painting and decorating will follow and it is planned that Sturrock's will hand over the Server Room to IT Services on Friday, 27th February, ready for the next stage of the project - Installation of the Server Cabinets.



32 Amp Power Outlets

stalled the new power outlets for the Server Cabinets.

Each Cabinet will have a minimum of two 32 Amp power outlets. Each power outlet will be connected to a

Server Cabinet Design

To meet the requirements necessary for the modern day Server Room we have re-designed the construction of our Server Cabinets. We have worked closely with Special Computer Centre, Hewlett Packard (Server Specialists) and Carillion (Network specialists) in constructing a Server Cabinet that will be capable of housing the modern day Server.

Each Server Cabinet will have its own unique Power Distribution System which will be centrally monitored by NHS Borders Systems Team.

The Power distribution bars (pictured) have their own LED display which gives a



visible read-out of the power being drawn from each power bar. This will be a valuable aid in calculating power usage within the Server Room. Each unit also sends this information, via

our network, to the HP Server Management system which can be monitored by our Systems Team led by Iain Allan.



For easier access and control each Server within the cabinet can be accessed from a single monitor and keyboard.

Special points of interest:

- **PLANNED COMPLETION DATES**
STAGE 1: 10TH APRIL
STAGE 2: 29TH MAY
- **RADIOLOGY PACS**
INSTALL: 28TH MARCH

Ordering and Delivery Status

ORDER STATUS

- STRUCTURED CABLING BEING SUPPLIED BY CARILLION
- CISCO NETWORK SWITCHES SUPPLIED BY AFFINITI
- SERVER RACKS SUPPLIED BY SCC

DELIVERY SCHEDULE

- UPS - INSTALLED
- MAIN SWITCH GEAR - INSTALLED
- AIR CONDITIONING - STAGE 1 INSTALLED
- SERVER RACKS - DELIVERED

Server Shutdown Status

Planned Shutdowns

Dates for Stage 1 of Construction.

- **POWER**
CONNECTION OF MAIN POWER CABLES - COMPLETED
- **SERVER DE-CANT**
STAGE 1A - CORE SYSTEMS
- SATURDAY 14TH MARCH
- SUNDAY 15TH MARCH

STAGE 1B - VARIOUS APPLICATIONS (NON-CRITICAL)
- SATURDAY 28TH MARCH
- SUNDAY 29TH MARCH

NOTE: ALL APPLICATION DOWNTIMES WILL BE PHASED DURING THESE PERIODS. DOWNTIME FOR CRITICAL DEPARTMENTAL APPLICATIONS ARE PLANNED NOT TO EXCEED 3 HOURS